

# LIUGONG & DEALERS GLOBAL >>>

## STRONG PRESENCE, SUBLIME SUPPORT

LiuGong has established a solid infrastructure with over 12,000 employees worldwide, 320 dealers, 7 regional parts depots and 9 strategically placed global offices to support its dealer and serve customers properly result in less damage and machine downtime.



The LiuGong series of logos herein, including but not limited to word marks, device marks, letter of alphabet marks and combination marks, as the registered trademarks of Guangxi Liugong Group Co., Ltd. are used by Guangxi Liugong Machinery Co., Ltd. with legal permission, and shall not be used without permission. Specifications and designs are subject to change without notice. Machines shown may include optional equipment and may not include all standard equipment.

Always a LiuGong dealer near you.



**Guangxi Liugong Machinery Co., Ltd.**

No. 1 Liutai Road, Liuzhou, Guangxi 545007, PR China  
T: +86 772 388 6124 E: overseas@liugong.com  
www.liugong.com

Like and follow us:



Version 1.0

06/2015 Designed by LiuGong

<b>Engine</b>	Cummins QSB4.5
<b>Gross Power</b>	90 kW (122 hp)
<b>Net Power</b>	84.3 kW (115 hp)
<b>Maximum Digging Depth</b>	5,470 mm
<b>Bucket Capacity</b>	0.6 m <sup>3</sup>
<b>Operating Weight</b>	16,000 kg

# 915E

EXCAVATOR

 **LIUGONG**



TOUGH WORLD. TOUGH EQUIPMENT.





<b>Excellent efficiency and fuel consumption-----</b>	<b>P4</b>
<b>Reliable and sustainable structures-----</b>	<b>P5</b>
<b>User-friendly working environment-----</b>	<b>P6</b>
<b>Optimal maintenance features-----</b>	<b>P8</b>
<b>Unexceptionable support chain-----</b>	<b>P9</b>
<b>Versatile attachments-----</b>	<b>P9</b>



# EXCELLENT EFFICIENCY AND FUEL CONSUMPTION

## ADVANCED HYDRAULIC SYSTEM

Proven negative flow hydraulics, optimize the main control valve, improve the speed of cylinders front end, while cutting down the hydraulic system's damper loss, leading to much better working efficiency. The pilot valves matching with the main control valve offer precise control.

## ENGINE

Equipped with a fuel efficient world-class Cummins QSB4.5 engine meets stage IV/EPA Tier 4 final emission standard. The QSB4.5 series come with a combination of a proven cooled-EGR system. It is also complemented by Cummins patented VGTTM Turbocharger, which continuously varies the airflow boost to precisely match engine and load demand for optimal performance.

## 6 WORKING MODES

6 Working modes: Power, Economy, Fine, Lifting, Breaker, Attachment.

The Liugong E series features 6 selectable working modes that optimize performance and fuel consumption to your specific conditions.

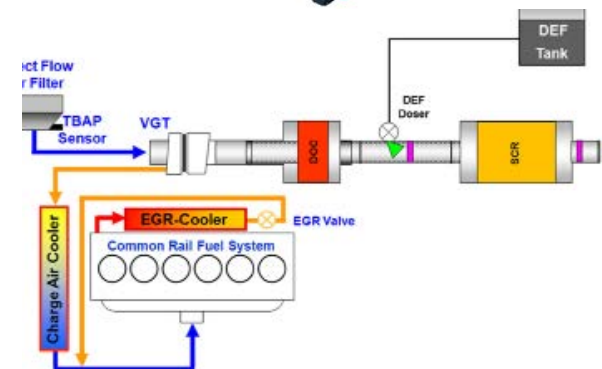
## IPC SYSTEM

Advanced IPC (Intelligent Power Control) system, make full use of engine oil consumption characteristics, make the engine-hydraulic pump to the best matching, achieve high efficiency, low and economical fuel consumption homework.

## AUTO-IDLE SPEED FUNCTION

Automatic speed reduction in lever neutral gear can reduce fuel consumption and noise.

Automatic velocity control is divided into two levels: if in 1 s no hydraulic request signal, the engine speed will automatically reduce 100 RPM. If after 3 s no hydraulic signal, the engine speed will drop 1,100 RPM. When the system detects the hydraulic signal, the engine will immediately return to the current throttle setting speed value.



# RELIABLE AND SUSTAINABLE STRUCTURES

## BOOM AND ARM

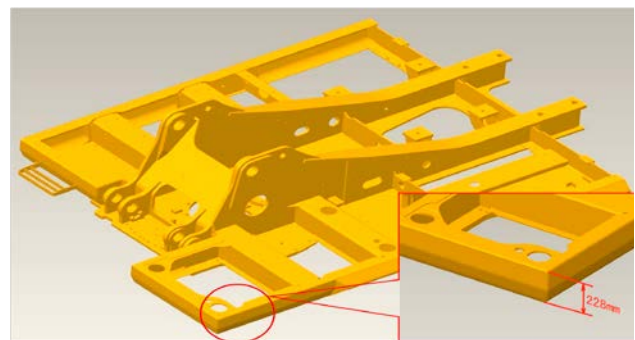
They are built with internal baffle plates and stress-relieved for added durability, constructed with thick plates of high tensile strength steel, these structures are designed with large cross sectional areas and large one piece steel castings in the boom and arm supports which exhibits long term durability and high resistance to bending and torsional stress. In addition they are inspected with ultrasound to reduce the defects and ensure the quality and reliability.

## PLATFORM

High cross section of h beam structure is used in the main platform, high strength, good rigidity, high reliability. High beam design platform, the height of 228 mm, D series compared to similar models increased by 11.4%, the strength is greatly increased. Welding platform with collision protection structure, improve the service life of the platform.

## UNDERCARRIAGE

The undercarriage of 915E is built with the mature technology of X type high strength box type walking frames. Long track beam, crawler system more stable and reliable. All of these contributes significantly to its outstanding stability and durability.



## USER-FRIENDLY WORKING ENVIRONMENT



### LARGE CAB

Compare with D series, the height increase 20 mm, length increase 20 mm, room for feet increase 29 mm, the space of cab increase 8.5%.

### BIG TOP SKYLIGHT

Compare with D series, the skylight area of E series increase 28.5%.

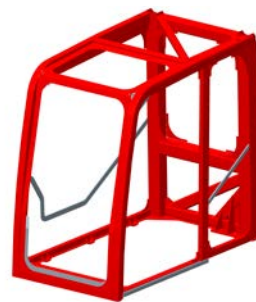
### ROPS CAB

Which meets the ISO 12117-2 safety standard for increased peace of mind in the unlikely event of machine roll over.



### SIDE HANDRAILS AND ANTI-SLIP TAPE

Handrails provide safe and easy access to the upperstructure.



ROPS Cab





**BROAD FIELD OF VISION**

Compare with D series, height of vision increase 15%, the area of right side glass increased by 10%.

**POSITIVE PRESSURE CAB**

In order to prevent dust in the environment into the cab, we use high sealing pressure cabin. When using air conditioning (external air import), increase the internal pressure to prevent dirt to enter the cab.

**LARGE LCD MONITOR**

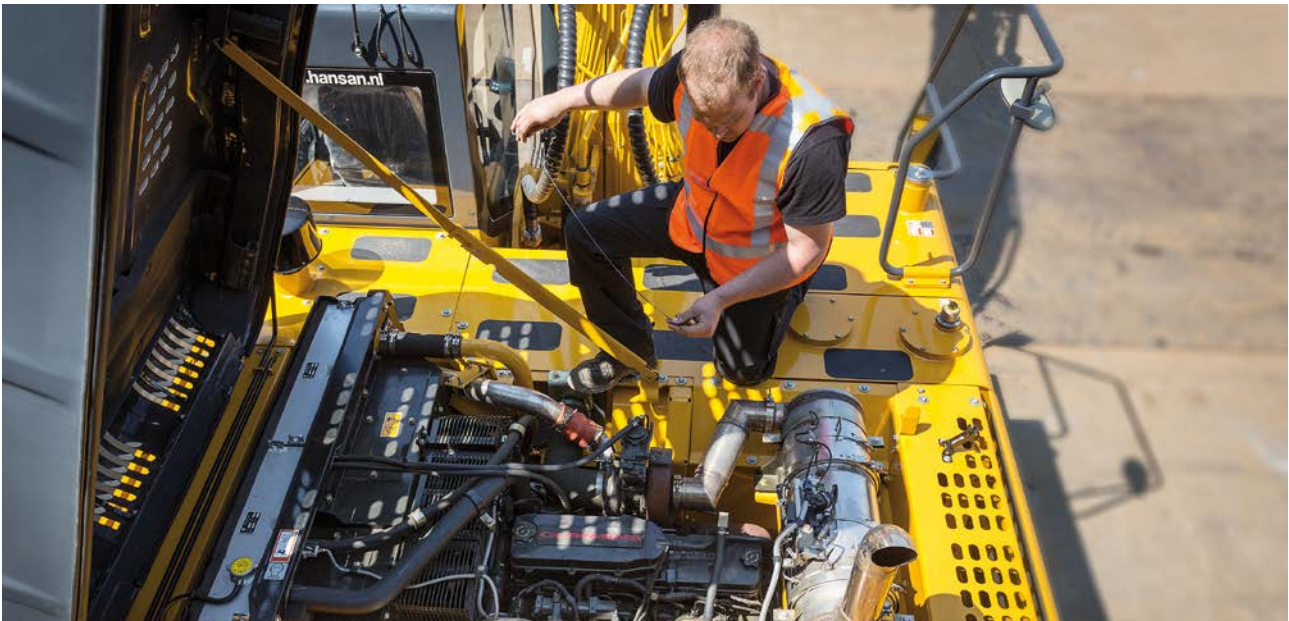
The color LCD monitor displays machine information which include working gear, hydraulic oil temperature, hydraulic pressure, service interval alerts, fault alarm and so on.



**OTHER EQUIPMENTS IN CAB**



## OPTIMAL MAINTENANCE FEATURES



### ENGINE FILTER

The engine oil filter and fuel filters are integrated into right side, easy access, easy maintenance and service.

### PILOT HYDRAULIC FILTER

The pilot hydraulic filter is located at the side of hydraulic tank, easy access, easy maintenance and service.

### PRESSURE SWITCHES AND SENSORS

Pressure switches and sensors concentrated in a block.

### A/C FILTER AND FUSE BOX

They are in the left of cab, you can change or clean it after you open the service access.

### AIR FILTER

Inside and outside air filters can be removed, they are simple and convenient to clean, and you can reach them on the ground.





## UNEXCEPTIONABLE SUPPORT CHAIN



### PROFESSIONAL ADVICE

According to your job requirements, We can give you advices to help you make the right machine choices.

### PARTS SUPPORT

All of genuine LiuGong spare parts are priced, non-original parts can't give you any warranty, if you used non-original parts in your machine, which may breakdown at any time due to incompatible parts. Therefore using genuine LiuGong spares parts is the better value for you and your machine.

So we utilize a worldwide parts network to maximize your machines' uptime and help you to save money.

### AFTER SALES SERVICE

As a customer of Liugong, you can get Liugong dealer's operating and maintenance instructions, during guarantee period Liugong dealer experts will support you rmanintenance service on time.





## VERSATILE ATTACHMENTS



**BUCKET**



**QUICK COUPLER**



**SHEAR**



**BREAKER**

# STANDARD AND OPTIONAL EQUIPMENT >>>

## STANDARD EQUIPMENT

### ENGINE SYSTEM

- Cummins engine, turbocharged, 6 Cylinder 4 stroke water cooled, Diesel Engine
- Auto-idle speed control
- Air filter with pre-cleaner
- Engine oil filter
- Pre-filter with water separator
- Radiator, oil cooler and intercooler
- IPC (Intelligent Power Control) System
- Engine overheat prevention system

### HYDRAULIC SYSTEM

- Power boost
- Boom and arm regeneration circuits
- Pilot oil filter
- Auto travel speed change
- Load holding valve
- Pilot control shut-off lever
- Swing with anti-reverse function

### OPERATOR STATION

- 6-working mode selection system: Power Mode , Economy Mode, Fine Mode, Lifting Mode, Breaker Mode, Attachment Mode
- Highly pressurized and tightly sealed cab with all-around visibility, large roof window with slide sun shade, front window wiper, removable lower window
- Air conditioner, heater, defroster
- AM/FM Radio with MP3 audio jack
- Color LCD monitor with alarms, filter/fluid change, fuel rate, water temperature, work mode, fault code, working hour, etc
- Glass-breaking hammer
- Ashtray, cigarette lighter
- Cup holder
- Floor mat
- Storage box
- Front glass lower guard

### UPPERSTRUCTURE

- Rear view mirror (right & left side)
- 2 batteries
- One key for door locks, cap locks
- Fuel gauge
- Hydraulic oil level gauge
- Storage box
- Swing parking brake
- Boom lights
- Exterior lights integrated into storage box
- Roll-Over Protective Structures (ROPS)

### UNDERCARRIAGE

- 700 mm double grouser track-shoes
- 1 track frame under-guards (each-side)
- Towing eye on base frame

### FRONT ATTACHMENTS

- 4,600 mm boom and 2,500 mm arm
- 0.6 m<sup>3</sup>, SAE, heaped) bucket

## OPTIONAL EQUIPMENT

### ENGINE SYSTEM

- Electrical fuel refilling pump
- Automatic engine warm-up system

### HYDRAULIC SYSTEM

- Security valves (2 on boom and 1 on arm)
- Control pattern change valve
- Hammer line
- Hydraulic quick coupler line
- Attachment rotating line
- PTO pump

### OPERATOR STATION

- Power outlet 24 V to 12 V converter
- 4 outside LED cab top lights
- Rotating beacon
- Rear view camera
- Travel alarm
- Chair heating
- Seat belt alarm

### UPPERSTRUCTURE

- Crash-proof beam
- Falling-Object Protective Structures (FOPS)

- Operator Protective Guards (OPG)

### UNDERCARRIAGE

- 500, 600 mm track-shoes
- Dozer blade

### FRONT ATTACHMENTS

- Hydraulic breaker
- Hydraulic quick coupler
- Ripper shank
- Grapple
- bucket 0.73/0.87/0.88/1.0/1.1 m<sup>3</sup>

## SPECIFICATIONS

ENGINE	
Emission Regulation	Tier 4 final / Stage IV
Model	Cummins QSB4.5
Type	4-cylinder, 4-stroke, in line, water-cooled, turbocharged, diesel engine.
Gross Power	90 kW (122 hp) @ 2,000 rpm
Net Power	84.3 kW (115 hp) @ 2,000 rpm
Maximum Torque	470 N·m @ 1,400 rpm
Bore x Stroke	107 x 124 mm
Displacement	4.5 L

DRIVE AND BRAKES	
<p>Driven by a one-piece two-gear piston hydraulic motor and reducer with small volume and strong traction, the motor and hydraulic pipelines are hidden in the track mechanism to prevent damage from rugged road surfaces, parking brake and shock-absorbing valve are installed inside the motor, ensuring stable travelling and parking as well as reliable braking.</p>	
Max. Travel Speed	High: 5.4 km/h Low: 3.2 km/h
Gradeability	70 %
Drawbar Pull	120.6 kN

SWING SYSTEM	
<p>The high-torque piston swing motor, with integral spring set, and automatic hydraulic release swing brake, is bolted directly to the swing reduction planetary swing gear box. The swing brake automatically resets for safer operation within five seconds of the swing function lever being brought to neutral. This insures safe travel and parking conditions.</p>	
Swing Speed	12.9 rpm

HYDRAULIC SYSTEM	
Main Pump	Two variable displacement piston pumps
Main Pumps Total Flow	2 x 120 L/min
Relief Pressure, main	34.3 MPa
Relief Pressure, boost	37.3 MPa
Pilot Pump Flow	20 L/min

UNDERCARRIAGE	
Center Frame	X-Frame
Track Adjustment	Hydraulic
Number of Carrier Rollers	1 each side
Number of Track Rollers	7 each side
Number of Idler Rollers	2 each side
Number of Shoes	46 each side
Width of Track Shoes	700 mm

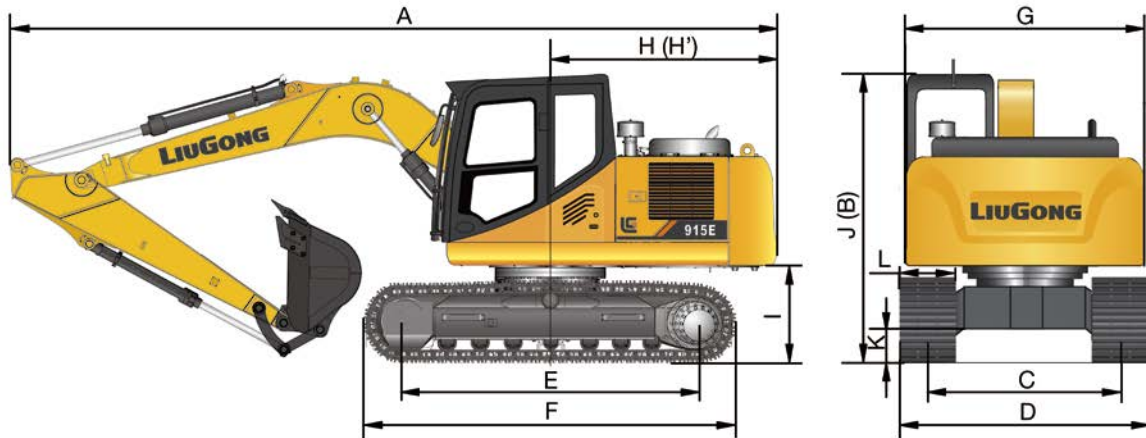
ELECTRIC SYSTEM	
System Voltage	24 V
Batteries	2 x 12 V

SERVICE CAPACITIES	
Fuel Tank	280 L
Engine Oil	14 L
Final Drive (each)	2.5 L
Swing Drive	3 L
Cooling System	21 L
Hydraulic Reservoir	160 L
Hydraulic System Total	240 L

OPERATING WEIGHT (APPROXIMATION)	
<p>The operating weight includes 4,600 mm boom, 2,500 mm arm, SAE heaped 0.6 m<sup>3</sup> bucket, 700 mm shoes, operator, lubricating oil, cooling liquid, full fuel tank, and standard configuration.</p>	
Shoe Ground Pressure	34 kPa
Operating Weight	16,000 kg

# SPECIFICATIONS >>>

## DIMENSIONS



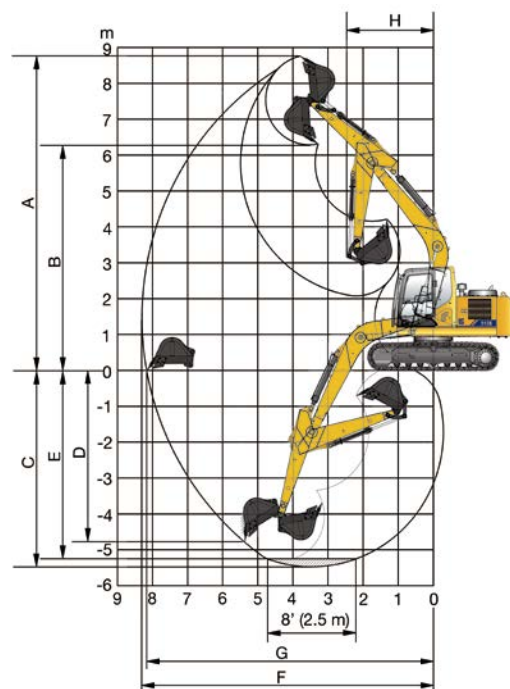
Unit: mm

<b>Boom Length</b>	Boom Length	4,600
<b>Arm Length</b>	Arm Length	2,500
<b>A</b>	Overall Length	7,750
<b>B</b>	Overall Height of Boom	2,900
<b>C</b>	Track Gauge	1,990
<b>D</b>	Overall Width	2,690
<b>E</b>	Length of crawler	3,744
<b>F</b>	Track Length on ground	3,010

<b>G</b>	Overall Width of Upper structure	2,515
<b>H</b>	Tail Swing Radius	2,290
<b>H'</b>	Rear-end Length	2,290
<b>I</b>	Counterweight Ground clearance	9,60
<b>J</b>	Overall Height of Cab	2,900
<b>K</b>	Min. Ground clearance	410
<b>L</b>	Track Shoe Width	700

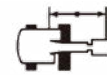
Unit: mm

<b>Boom length</b>	Boom length	4,600
<b>Arm length</b>	Arm length	2,500
<b>Bucket capacity</b>	Bucket capacity	0.55 m <sup>3</sup>
<b>A</b>	Dig height	8,760
<b>B</b>	Dump height	6,310
<b>C</b>	Dig depth	5,470
<b>D</b>	Dig depth of vertical	4,810
<b>E</b>	Depth of 8 bottom	5,250
<b>F</b>	Max reach	8,300
<b>G</b>	Reach at ground level	8,170
<b>H</b>	Min swing radius	2,470
<b>ISO</b>	Bucket Breakout Force	96.1 kN
	Arm Breakout Force	70 kN



## Note:

- ※Indicates the load is limited by hydraulic capacity rather than tipping capacity.
- The above rated loads are in compliance with ISO 10567 hydraulic excavator lift capacity rating standard. They do not exceed 87% of hydraulic lifting capacity or 75% tipping load.
- Ratings at bucket lift hook.



Rating over-side



Rating over-front

## Blade Position : Down

Bucket: SAE 0.6 m <sup>3</sup> , 780 kg, Boom: 4,600 mm, Arm: 2,500 mm, Shoes: 700 mm, Counterweight: 4,300 kg												
Lift Point Height											Max. Reach	
	1.5 m		3 m		4.5 m		6 m		Front	Side	mm	
6.0 m	kg				※3,422	※3,422			※3,327	3,074	5,400	
4.5 m	kg				※3,599	※3,599	※3,464	2,609	※2,923	2,345	6,400	
3.0 m	kg			※5,848	※5,848	※4,293	3,955	※3,669	2,557	※3,513	2,113	6,800
1.5 m	kg			※8,116	7,172	※5,140	3,756	※4,006	2,479	※3,586	1,989	7,000
0	kg			※8,849	6,909	※5,680	3,616	※4,232	2,416	※3,713	2,041	6,800
-1.5 m	kg	※13,914	※13,914	※8,405	6,889	※5,658	3,568	※4,095	2,398	※3,698	2,210	6,400
-3.0 m	kg	※11,296	※11,296	※7,060	6,992	※4,854	3,611			※3,707	2,815	5,400

## Blade Position : Up

Bucket: SAE 0.6 m <sup>3</sup> , 780 kg, Boom: 4,600 mm, Arm: 2,500 mm, Shoes: 700 mm, Counterweight: 4,300 kg												
Lift Point Height											Max. Reach	
	1.5 m		3 m		4.5 m		6 m		Front	Side	mm	
6.0 m	kg				※3,422	※3,422			3,327	3,074	5,400	
4.5 m	kg				※3,599	※3,599	3,020	2,609	2,714	2,345	6,400	
3.0 m	kg			※5,848	※5,848	※4,293	3,955	2,967	2,557	2,448	2,113	6,800
1.5 m	kg			※8,116	7,172	4,435	3,756	2,886	2,479	2,307	1,989	7,000
0	kg			8,606	6,909	4,288	3,616	2,820	2,416	2,373	2,041	6,800
-1.5 m	kg	※13,914	※13,914	※8,405	6,889	4,237	3,568	2,802	2,398	2,575	2,210	6,400
-3.0 m	kg	※11,296	※11,296	※7,060	6,992	4,282	3,611			3,298	2,815	5,400