



# 925E Excavator



<b>Engine</b>	Cummins
<b>Gross Power</b>	142 kW (190 hp) @ 2,000 rpm
<b>Net Power</b>	129 kW (173 hp) @ 2,000 rpm
<b>Maximum Digging Depth</b>	6,925 mm
<b>Standard Bucket Capacity</b>	1.2 m <sup>3</sup>
<b>Operating Weight</b>	25,500 kg

# 925E Excavator



## ENGINE

Emission Regulation	Tier 4 interim / Stage IIIB
Make	Cummins
Gross Power	142 kW (190 hp) @ 2,000 rpm
Net Power	129 kW (173 hp) @ 2,000 rpm
Peak Torque	810 N · m @ 1,500 rpm
Number of Cylinders	6
Displacement	6.7 L

## TRACK DRIVE

Maximum Travel Speed	5.9 km/h
Gradeability	70 %
Drawbar Pull	229 kN

## UNDERCARRIAGE

Shoe Width	600 mm
Number of Shoes per Side	51
Number of Upper Rollers per Side	9
Number of Bottom Rollers per Side	2

## HYDRAULIC SYSTEM

Main Pumps Total Flow	480 L/min
Relief Pressure, main	34.3 MPa
Relief Pressure, boost	37.2 MPa
Pilot Pump Flow	19.6 L/min

## SWING SYSTEM

Swing Speed	11.1 rpm
-------------	----------

## REFERENCE ARM

Arm Length	2,980 mm
Arm Breakout Force, normal, ISO	124 kN
Arm Breakout Force, boost, ISO	134 kN

## WORKING RANGES

Maximum Dig Depth	6,925 mm
Reach at Ground Level	10,180 mm
Depth of 8' Level Bottom	6,675 mm
Maximum Dig Height	9,865 mm
Dump Height	6,920 mm
Maximum Dig Depth of Vertical Wall	5,795 mm

## BUCKET PERFORMANCE

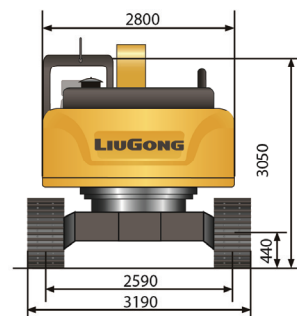
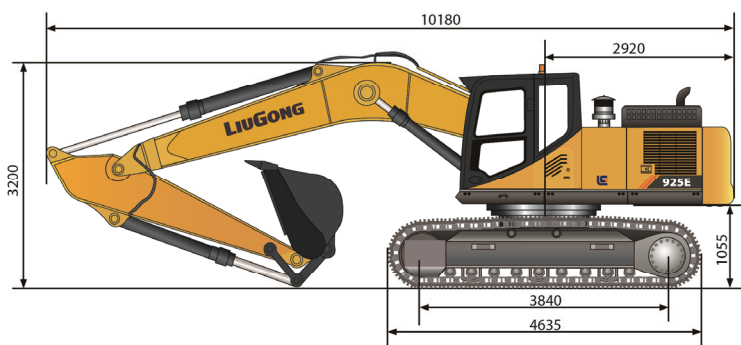
Standard Bucket Heaped Capacity (Referenced)	1.2 m <sup>3</sup>
Minimum Heaped Capacity of Bucket Options	1 m <sup>3</sup>
Maximum Heaped Capacity of Bucket Options	1.3 m <sup>3</sup>
Bucket Breakout Force, normal, ISO	165 kN
Bucket Breakout Force, boost, ISO	179 kN

## SERVICE CAPACITIES

Fuel Tank	470 L
Engine Oil	25 L
Cooling System	30 L
Hydraulic Reservoir	210 L
Hydraulic System Total	330 L

Lift Point Height		Bucket: SAE 1.2m <sup>3</sup> , 1000 kg		Boom: 6,000 mm		Arm: 2,980 mm		Shoes: 600 mm		Counterweight: 5,400 kg		Max. Reach		
		3 m		4.6 m		6.1 m		7.6 m		Front	Side	mm		
7.6m	kg									※2,750	※2,750	7,000		
6.1 m	kg							4,538	3,926	※2,409	※2,409	8,000		
4.6 m	kg					※5,570	※5,570	※5,194	3,812	※2,629	※2,629	8,600		
3.0 m	kg	※14,652	※14,652	※8,795	8,362	※6,751	※5,283	※5,785	3,631	※3,019	2,688	8,900		
1.5m	kg			※11,191	8,161		4,921	5,904	3,443	※2,580	2,518	9,100		
0m	kg	※11,749	※11,749	※12,668	7,198	8,203	4,662	5,742	3,298	※4,095	2,602	8,800		
-1.5 m	kg	※16,294	14,125	※13,125	7,062	8,062	4,540	5,668	3,231	※4,788	2,806	8,300		
-3.0m	kg	※18,835	14,364	※12,672	7,119	8,078	4,554	※5,366	3,278	※5,366	3,278	7,600		
-4.6 m	kg	※16,048	14,821	※11,097	7,350	※7,979	6,587			※7,661	4,591	6,200		

1. ※ Indicates the load is limited by hydraulic capacity rather than tipping capacity.  
2. The above rated loads are in compliance with ISO 10567 hydraulic excavator lift capacity rating standard. They do not exceed 87% of hydraulic lifting capacity or 75% tipping load.  
3. Ratings at bucket lift hook.



Unit: mm

## Guangxi Liugong Machinery Co., Ltd.

No. 1 Liutai Road, Liuzhou, Guangxi 545007, PR China  
T: +86 772 388 6124 E: overseas@liugong.com  
[www.liugong.com](http://www.liugong.com)

01/2013 Designed by Liugong

Specifications and designs are subject to change without notice. Machines shown may include optional equipment.